

# Acute Care

## Background Screening and Identity Verification

Acute care organizations, hospitals, emergency rooms, and surgical centers, need to hire fast without compromising compliance or risk. First Advantage's Acute Care Center of Excellence (COE) delivers rapid, identity-first screening that meets CMS and Joint Commission standards. With some of the industry's fastest turnaround times, we help you bring the right people on board so patients get the high-quality care they deserve.

### Hire Smarter. Onboard Faster.™

- **Healthcare Specific Screening**  
Purpose built for clinical roles with license, education, and sanctions checks to promote accuracy and compliance.
- **Identity Verification**  
Mitigate risk against impersonation or credential fraud with advanced biometric and document-matching technology.
- **Compliance Engine**  
Streamline CMS, Joint Commission, and state-level requirements with automated, audit-ready workflows.

### Get help for your hospital

- Hire fast
- Verify credentials
- Mitigate risk
- Stay compliant



### Delivering Real Outcomes for Acute Care<sup>1</sup>

**90%** of U.S. criminal screens close on Day 1

**500%** growth in identity-first customer adoption since 2022

**90%** of education verifications completed by Day 3

**24,000** drug test sites across the U.S.

VANDERBILT  UNIVERSITY  
MEDICAL CENTER

*"Having a focus on healthcare and knowing what my team deals with really helps. It gives me more confidence that First Advantage knows what's going on in my industry."*

– HR Manager, Vanderbilt University Medical Center

## Healthcare Hiring Solutions

- ✓ **Drug and Occupational Health Screening**  
Get consistent coverage wherever you operate with fast and expansive drug tests and occupational health screenings that draw from over 24,000 test sites nationwide.<sup>1</sup>
- ✓ **Fingerprinting**  
As approved contractors with the FBI, AHCA, and NMLS, our national network is equipped to capture and submit electronic fingerprints using digital technology, delivering turnaround times of less than 24 hours.
- ✓ **Global Background Checks**  
With thorough background checks conducted in over 200 countries and territories, supported by regional experts, you can confidently move candidates forward.
- ✓ **Clinical Concierge**  
Tailored to the unique program requirements of healthcare organizations, we coordinate candidate services end-to-end, reducing turnaround times from 16 days to as little as 4 to 7 days.
- ✓ **Identity Verification**  
Use identity first services, available ahead of background screening or at other points in time, to help verify identity and detect potential fraudulent activity.
- ✓ **Criminal Background Checks**  
Access fast, consistent results for background checks and a view of a candidate's history so you can hire with confidence.

## Seamless Integrations

Streamline hiring productivity with screening that connects directly to the HR tools you already use.



dayforce

PageUp

UKG

symplr

icims



JOZZHR | LEVER | JOBVITE  
by employ

ORACLE | Partner

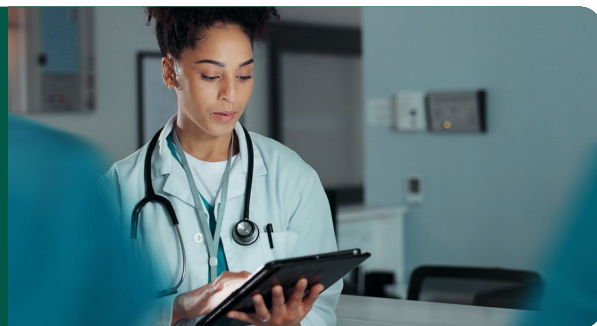
PARADOX

SAP SuccessFactors

## Get Started Today

We'll help you hire and start workers sooner while mitigating risk and maintaining compliance.

Contact us →



<sup>1</sup> First Advantage, as of 12/31/2024. Note: Not all services are available at all locations.

This content is offered for informational purposes only. First Advantage is not a law firm, and this content does not, and is not intended to, constitute legal advice. Information in this may not constitute the most up-to-date legal or other information. Readers of this content should contact their own legal advisors concerning their particular circumstances. No reader, or user of this content, should act or refrain from acting on the basis of information in this content. Only your individual attorney or legal advisor can provide assurances that the information contained herein – and your interpretation of it – is applicable or appropriate to your particular situation. Use of, and access to, this content does not create an attorney-client relationship between the reader or user of this presentation and First Advantage.